

HP1486 -UN-01JAN94



JOHN DEERE 7721 COMBINE WITH BELT PICKUP AND PICKUP PLATFORM

(SPECIFICATIONS AND DESIGN SUBJECT TO CHANGE WITHOUT NOTICE)

NOTE

IN ADDITION TO TITAN COMBINES, PARTS INFORMATION FOR TITAN II COMBINES IS ALSO LOCATED IN THIS CATALOG. SERIAL NUMBER (610601-) INDICATES TITAN II PARTS.

FOR 40 SERIES CORN HEAD PARTS INFORMATION, REFER TO JOHN DEERE 40 SERIES CORN HEAD PARTS CATALOG - PC-1223.

FOR 50 SERIES ROW-CROP HEAD PARTS INFORMATION, REFER TO JOHN DEERE 50 SERIES ROW-CROP HEAD PARTS CATALOG - PC-1549.

FOR 50A SERIES ROW-CROP HEAD PARTS INFORMATION, REFER TO JOHN DEERE 50A SERIES ROW-CROP HEAD PARTS CATALOG - PC-1747.

FOR THREE-ROLLER BELT PICKUP PARTS INFORMATION, REFER TO JOHN DEERE THREE-ROLLER BELT PICKUP PARTS CATALOG - PC-1189.

IMPORTANT

THIS PARTS CATALOG CONTAINS COMPLETE PARTS INFORMATION ON THE 7721 COMBINE. VINTAGE IS DETERMINED BY SERIAL NUMBERS UNDER WHICH COMBINES WERE MANUFACTURED. IT IS IMPORTANT THAT THE CORRECT SERIAL NUMBER BE USED WHEN ORDERING PARTS.

SERIAL NUMBERS

WHEN WRITING ABOUT OR FILLING OUT WARRANTY CLAIMS, USE ALL NUMBERS, LETTERS AND SPACES SHOWN ON THE SERIAL NUMBER PLATE.

SEPARATOR SERIAL NUMBER PLATE

E7721007001H

E - DESIGNATES EQUIPMENT
7721 - DESIGNATES COMBINE MODEL
007001 - DESIGNATES COMBINE SERIAL NUMBER
H - DESIGNATES FACTORY (HARVESTER WORKS)

THE SEPARATOR SERIAL NUMBER PLATE IS LOCATED ON THE REAR LEFT-HAND UPRIGHT.

SERIAL NUMBER LISTING INFORMATION

SERIAL NUMBER INFORMATION IS LISTED TO SHOW ON WHICH MACHINES EACH PART CAN BE USED; FOR EXAMPLE:

- THE PART CAN BE USED ON ALL MACHINES.
- 000000- THE PART CAN BE USED ON ALL MACHINES BEGINNING WITH THE SERIAL NUMBER LISTED.
- 000000 THE PART CAN BE USED ON ALL MACHINES UP TO AND INCLUDING THE SERIAL NUMBER LISTED.
- 000000-000000 THE PART CAN BE USED ON ALL MACHINES BETWEEN AND INCLUDING THE SERIAL NUMBERS LISTED.

WHEN XXXXXX'S ARE LISTED IN PLACE OF A SERIAL NUMBER, A SERIAL NUMBER CHANGE WAS MADE BUT THE EXACT SERIAL NUMBER WAS NOT AVAILABLE WHEN THE CATALOG WAS PRODUCED.

DIRECTION ARROW

ARROWS ARE USED WITH ILLUSTRATIONS TO INDICATE THE FRONT OF THE UNIT. "RIGHT-HAND" AND "LEFT-HAND" SIDES ARE DETERMINED BY FACING IN THE DIRECTION OF MACHINE FORWARD TRAVEL.

BOX-ENCLOSED ILLUSTRATIONS

A KEY NUMBER, SHOWN IN THE PARTS LIST, IS ASSIGNED TO A BOX ENCLOSING ALL PARTS SOLD AS A SERVICE ASSEMBLY. A BOX NOT KEYED INCLUDES NON-CURRENT PARTS.

KITS

KIT INFORMATION WILL BE FOUND IMMEDIATELY FOLLOWING THE STORY IN WHICH IT IS USED. THE ILLUSTRATION IS REPEATED WITH ONLY THE KIT PARTS CALLED OUT AND WITH ALL OTHER PARTS SHOWN IN PHANTOM FOR RELATIONSHIP.

JDM REMANUFACTURED COMPONENTS

THE SERVICE PARTS LISTED IN THIS CATALOG ARE INTENDED FOR THE REPAIR OF ORIGINAL EQUIPMENT COMPONENTS. ALTHOUGH MOST SERVICE PARTS MAY BE USED TO REPAIR REMANUFACTURED COMPONENTS, THE REMANUFACTURED DESIGN MAY CHANGE PARTS SUFFICIENTLY SO THAT SERVICE PARTS ARE INADEQUATE OR NOT USABLE.

BOLT AND CAP SCREW STRENGTH IDENTIFICATION

BOLTS AND CAP SCREWS REQUIRED TO HAVE HIGH-STRENGTH QUALITIES EQUIVALENT TO SAE GRADE 8 ARE IDENTIFIED THROUGHOUT THIS CATALOG BY THE DESCRIPTION HS SAE 8. ALL STANDARD BOLTS AND CAP SCREWS ARE SAE GRADE 5 OR LOWER.

COMPLETE GOODS LISTINGS

COMPLETE GOODS ARE LISTED IN BOLD FACE TYPE. ORDER SEPARATELY. DO NOT INCLUDE ON REPLACEMENT PARTS ORDER.

SI UNITS OF MEASURE

METRIC DIMENSIONS ARE GIVEN, WHERE APPLICABLE, THROUGHOUT THIS PARTS CATALOG.

TRADEMARKS

THROUGHOUT THIS PARTS CATALOG, YOU WILL FIND THE FOLLOWING DEERE & COMPANY TRADEMARKS:

DIAL-A-MATIC™
HARVESTRAK™

TORQ-GARD SUPREME®
QUIK-TATCH™

CHANGE INDICATOR LINE (MICROFICHE CATALOGS ONLY)

CHANGES AFFECTING THE ORDERING OF PARTS ARE IDENTIFIED BY VERTICAL LINES MARKED IN THE LEFT-HAND MARGIN OF REVISED PARTS LISTING IMAGES. A LINE IS ALSO AT THE LEFT-HAND EDGE OF THE SAME PART NUMBER IN THE NUMERICAL INDEX TO SHOW THE LOCATION OF REVISED INFORMATION.

SECTIONAL INDEX

	SECTION
GENERAL INFORMATION	10
ELECTRICAL	40
POWER TRAIN	50
HYDRAULICS	70
SEPARATOR SHELL	80
HEADERS - REFER TO INDIVIDUAL HEADER PARTS CATALOGS	100
FEEDER HOUSE	110
SEPARATOR	120
GRAIN TANK AND UNLOADING AUGER	130
MAJOR DRIVES	140
HEADER HEIGHT CONTROL	160
DECALS, BELTS AND CHAINS	170
NUMERICAL INDEX	180

**Thanks very much for your reading,
Want to get more information,
Please click here, Then get the complete
manual**

JustClickHere 

NOTE:

**If there is no response to click on the link above,
please download the PDF document first, and then
click on it.**

**Have any questions please write to me:
admin@servicemanualperfect.com**

ALPHABETICAL INDEX

GRID		PAGE	GRID		PAGE
	A				
2I23	ACTUATING SWITCH AND MOUNTING PARTS.....	160-10	1D1	BELT PICKUP HYDRAULIC PUMP MOUNTING	50-20
2C16	AIR DUCTS, CLEANING FAN	120-53	1E11	BELT PICKUP OIL LINES	70-35
2I22	AMPLIFIER AND BRACKET	160-9	1E2	BELT PICKUP PUMP	70-25
2B6	ARM, DUAL-RANGE CYLINDER DRIVE	120-15	1E6	BELT PICKUP PUMP BACK PLATE KIT	70-29
1D17	ARMATURE REPAIR KIT (AE37061)	70-15	2J9	BELT PICKUP PUMP DRIVE SHEAVES	170-4
1D19	ARMATURE REPAIR KIT (AH96359)	70-17	1E4	BELT PICKUP PUMP KIT	70-27
2H9	AUGER AND HOUSING, GRAIN TANK VERTICAL.....	130-27	1E2	BELT PICKUP SHEAVE.....	70-25
2H20	AUGER AND HOUSING, HORIZONTAL UNLOADING	130-39	2C9	BELT, BEATER.....	120-45
2H3	AUGER COVERS, GRASS SEED UNLOADING	130-21	2C10	BELT, BEATER.....	120-46
2H18	AUGER DRIVE GEAR CASE,HORIZONTAL UNLDG.	130-37	2A25	BELT, CYLINDER DRIVE INTERMEDIATE SHAFT	120-9
2G22	AUGER DRIVE TIGHTENERS,GRAIN TANK CROSS	130-15	2E11	BELT, DR. CTRSHAFT.,CLEAN GRAIN ELEVATOR.....	120-100
2H11	AUGER LOWER GEAR CASE, VERTICAL	130-29	2B1	BELT, DUAL-RANGE CYLINDER DRIVE INTERMEDIATE SHAFT	120-10
1E17	AUGER SWING HYDRAULIC CYLINDER,UNLOADING	70-41	2F7	BELT, GEAR CASE, LOADING AUGER.....	120-123
1E18	AUGER SWING HYDRAULIC CYLINDER,UNLOADING	70-42	2F24	BELT, REAR, STRAW CHOPPER	120-141
1E20	AUGER SWING HYDRAULIC CYLINDER,UNLOADING	70-44	2F12	BELT, STRAW CHOPPER DRIVE	120-129
1E17	AUGER SWING HYDRAULIC MOUNTING,UNLOADING....	70-41	2D11	BELT, STRAW SPREADER DRIVE	120-73
1E18	AUGER SWING HYDRAULIC MOUNTING,UNLOADING....	70-42	2C22	BELT,SHOE GRAIN SUPPLY AUGERS DR. SHAFT	120-59
1E20	AUGER SWING HYDRAULIC MOUNTING,UNLOADING....	70-44	2J10	BELTS AND SHEAVES	170-5
2H13	AUGER SWIVEL SHROUD,HORIZONTAL UNLOADING....	130-31	2J11	BELTS AND SHEAVES, BEATER DRIVE	170-6
2H15	AUGER SWIVEL, HORIZONTAL UNLOADING	130-33	2J11	BELTS, BEATER DRIVE	170-6
2H16	AUGER SWIVEL, HORIZONTAL UNLOADING	130-34	2J14	BELTS, CLEAN GRAIN ELEVATOR	170-9
2G24	AUGER, CROSS, GRAIN TANK FRONT	130-17	2J12	BELTS, DRIVE, CLEANING FAN	170-7
2G25	AUGER, GRAIN TANK REAR CROSS	130-18	2J8	BELTS, DRIVE, FEEDER HOUSE (REG. FIXED)	170-3
2F5	AUGER, LOADING.....	120-121	2J14	BELTS, LOADING AUGER	170-9
2E17	AUGER, LOWER TAILINGS	120-107	2J13	BELTS,DRIVE,SHOE GRAIN SUPPLY AUGERS.....	170-8
2E18	AUGER, LOWER TAILINGS	120-108	2G4	BLADE, STRAW SPREADER	120-147
2E2	AUGER, LOWER, CLEAN GRAIN.....	120-91	2F25	BLADES AND ROTOR, STRAW CHOPPER	120-142
2H21	AUGER, UNLOADING LUBE BANK SYSTEM	130-40	2G1	BLADES AND ROTOR, STRAW CHOPPER	120-143
2F2	AUGER, UPPER TAILINGS.....	120-118	2E7	BOOT, CLEAN GRAIN ELEVATOR HOUSING	120-96
2D2	AUGERS, HOUSING, SHOE GRAIN SUPPLY.....	120-63	1G2	BOTTOM SHEETS, FEEDER HOUSE	110-9
2C22	AUGERS, SHOE GRAIN SUPPLY DRIVE SHEAVE	120-59	1B5	BOX, CONTROL, LOW SHAFT SPEED MONITORS.....	40-16
2C22	AUGERS, SHOE GRAIN SUPPLY, DRIVE SHAFT	120-59	1F15	BOX, TOOL.....	80-11
2D4	AUGERS, SUPPLY, SHOE GRAIN.....	120-65	2E7	BRACE, CLEAN GRAIN ELEVATOR HOUSING	120-96
1C11	AXLE FRAME	50-5	2G11	BRACE, GRAIN TANK REINFORCEMENT	130-4
1C12	AXLE FRAME	50-6	2G12	BRACE, GRAIN TANK, REINFORCEMENT BRACE	130-5
	B		2A21	BRACES, SUPPORT, CYLINDER DRIVE.....	120-5
2B22	BAR, CYLINDER SHEAR.....	120-33	2A22	BRACES, SUPPORT, INTERMEDIATE DRIVE, DUAL-RANGE CYLINDER.....	120-6
1C11	BEAM, HITCH.....	50-5	2E5	BRACKET, CLEAN GRAIN ELEVATOR HOUSING	120-94
1C12	BEAM, HITCH.....	50-6	2I22	BRACKET, FRONT, AMPLIFIER	160-9
2B17	BEARING HSG.,CYL.SHAFT,LUBE BANK SYS-RH.....	120-27	1B11	BRACKET, HARVESTRAK CONSOLE	40-22
2C12	BEARING, BEATER, LUBE BANK SYSTEM-L.H.....	120-48	2D16	BRACKETS, CHAFFER FRAME	120-79
2C13	BEARING, BEATER, LUBE BANK SYSTEM-R.H.	120-49	2I19	BRACKETS, DIAL-A-MATIC.....	160-6
2E24	BEARINGS, TAILINGS ELEVATOR CONVEYOR.....	120-114	1A17	BRACKETS, MOUNTING, CONTROL BOX	40-3
2E25	BEARINGS, TAILINGS ELEVATOR CONVEYOR.....	120-115	1A18	BRKT., MTG., CONTROL BOX, DIAL-A-MATIC.....	40-4
2C9	BEATER	120-45		C	
2C10	BEATER	120-46	1B23	CABLE, WIRING.....	40-34
2C9	BEATER AND TACHOMETER DRIVE	120-45	1D25	CAP, HYDRAULIC OIL RESERVOIR	70-23
2C10	BEATER AND TACHOMETER DRIVE	120-46	1C23	CASE, GEAR	50-17
2C12	BEATER BEARING LUBE BANK SYSTEM-L.H.	120-48	2J22	CAUTION DECALS	170-17
2C13	BEATER BEARING LUBE BANK SYSTEM-R.H.	120-49	2D18	CHAFFER	120-81
2C9	BEATER BELT	120-45	2D14	CHAFFER FRAME	120-77
2C10	BEATER BELT	120-46	2D16	CHAFFER FRAME BRACKETS.....	120-79
2C5	BEATER DRIVE	120-40	2D14	CHAFFER FRAME COVER	120-77
2C6	BEATER DRIVE	120-41	2D16	CHAFFER FRAME SWINGERS.....	120-79
2J11	BEATER DRIVE SHEAVES AND BELTS	170-6	2E12	CHAIN, CONVEYOR, CLEAN GRAIN ELEVATOR	120-101
2C7	BEATER DRIVE, DUAL-RANGE	120-43	2D23	CHAIN, CRANK SHOE.....	120-87
2C9	BEATER FOR CYLINDER TACHOMETER.....	120-45	2J12	CHAIN, DRIVE, STRAW WALKER	170-7
2C10	BEATER FOR CYLINDER TACHOMETER.....	120-46	1G8	CHAIN, FEEDER CONVEYOR	110-15
2J10	BELT AND SHEAVES TORQ-SENSING CTRSHAFT	170-5	1C11	CHAIN, SAFETY, HITCH	50-5
1B19	BELT PICKUP DRIVE - ELECTRIC MOTOR	40-30	1C12	CHAIN, SAFETY, HITCH	50-6
1E7	BELT PICKUP FLOW CONTROL VALVE.....	70-30	2D12	CHAIN, STRAW WALKER	120-75
1E8	BELT PICKUP FLOW CONTROL VALVE KIT	70-31	2E24	CHAIN, TAILINGS ELEVATOR CONVEYOR	120-114

ALPHABETICAL INDEX - CONTINUED

GRID		PAGE	GRID		PAGE
2H5	GRAIN TANK SUMP HOUSING AND SHIELD.....	130-23	1A18	HOUSING, CONTROL BOX, DIAL-A-MATIC	40-4
2H6	GRAIN TANK SUMP HOUSING AND SHIELD.....	130-24	2F5	HOUSING, LOADING AUGER.....	120-121
2H9	GRAIN TANK VERTICAL AUGER AND HOUSING	130-27	2E15	HOUSING, LOWER TAILINGS	120-105
2G11	GRAIN TANK, REINFORCEMENT BRACE	130-4	2D2	HOUSING, SHOE GRAIN SUPPLY AUGERS	120-63
2G12	GRAIN TANK, REINFORCEMENT BRACE	130-5	1D2	HOUSING, SPINDLE, AND WHEEL	50-21
2G13	GRAIN TANK, SKIRTS.....	130-6	2F15	HOUSING, STRAW CHOPPER	120-132
2H3	GRASS SEED UNLOADING AUGER COVERS ATT.	130-21	2F17	HOUSING, STRAW CHOPPER.....	120-134
2G6	GUARD, STRAW SPREADER.....	120-149	2E21	HOUSING, TAILINGS ELEVATOR	120-111
			2E22	HOUSING, TAILINGS ELEVATOR	120-112
	H		2F2	HOUSING, UPPER TAILINGS.....	120-118
2F14	HANDLE, STRAW CHOPPER CURTAIN	120-131	1G6	HYDRAULIC CYLINDER KIT, HEADER LIFT.....	110-13
2F15	HANDLE, STRAW CHOPPER HOUSING	120-132	1G5	HYDRAULIC CYLINDER, HEADER LIFT	110-12
2F17	HANDLE, STRAW CHOPPER HOUSING	120-134	1C24	HYDRAULIC HOSE SUPPORT	50-18
2F23	HANDLE, STRAW CHOPPER KNIFE AND SUPPORT	120-140	1D6	HYDRAULIC LINES AND HOSES, HITCH BEAM	70-3
2J4	HARNESS ADAPTER, DIAL-A-MATIC, FOR 900 SERIES HEADERS.....	160-15	1D13	HYDRAULIC OIL LINES AND HOSES	70-11
1A17	HARNESS, CONTROL BOX	40-3	1D25	HYDRAULIC OIL RESERVOIR	70-23
1B16	HARNESS, FIELD LAMP	40-27	1D1	HYDRAULIC PUMP MOUNTING, BELT PICKUP.....	50-20
1B14	HARNESS, GRAIN TANK	40-25			
1B3	HARNESS, HITCH TUBE.....	40-14		I	
1B7	HARNESS, MAIN SEPARATOR AND SHAFT MONITORS.....	40-18	2C5	IDLER, BEATER.....	120-40
1B2	HARNESS, MAIN, HITCH TUBE	40-13	2C6	IDLER, BEATER.....	120-41
1B5	HARNESS, MAIN, SEPARATOR.....	40-16	2E10	IDLER, CLEAN GRAIN ELEVATOR	120-99
1B14	HARNESS, UNLOADING AUGER	40-25	2H25	IDLER, FEEDER HOUSE DRIVE	140-4
1B9	HARVESTRAK COMBINE MONITOR	40-20	2I13	IDLER, SECONDARY COUNTERSHAFT DRIVE	140-17
1B11	HARVESTRAK CONSOLE AND BRACKET	40-22	2C24	IDLER, SHOE GRAIN SUPPLY AUGERS	120-61
2J3	HARVESTRAK LEVER SELECTOR LOCK.....	160-14	2F12	IDLER, STRAW CHOPPER DRIVE.....	120-129
1B20	HEADER ELECTROMAGNETIC CLUTCH	40-31	2G21	IDLER, UNLOADING AUGER DRIVE	130-14
2J4	HEADER HEIGHT CONTROL, DIAL-A-MATIC, HARNESS ADAPTER FOR 900 SERIES HEADERS	160-15	2J8	IDLERS, FEEDER HOUSE (REG. FIXED)	170-3
1G5	HEADER LIFT HYDRAULIC CYLINDER.....	110-12	2J20	IDLERS, STRAW CHOPPER.....	170-15
1G6	HEADER LIFT HYDRAULIC CYLINDER KIT	110-13	1A21	INDICATORS, CONTROL BOX	40-7
1D11	HEADER LIFT OIL LINES	70-9	1A22	INDICATORS, CONTROL BOX	40-8
2G13	HINGE, GRAIN TANK	130-6	2H1	INNER UNLOADING AUGER COVERS	130-19
1C11	HITCH BEAM	50-5			
1C12	HITCH BEAM	50-6		J	
1D6	HITCH BEAM HYDRAULIC LINES AND HOSES.....	70-3	1C16	JACK STAND, HITCH BEAM.....	50-10
1C16	HITCH BEAM JACK STAND	50-10	1F17	JACKSTAND, REAR.....	80-13
1B3	HITCH TUBE HARNESS AND SHORT TURN SENSOR....	40-14	1C19	JOINT, UNIVERSAL. REAR.....	50-13
1C15	HITCH TUBE LOCKING MECHANISM	50-9	1C20	JOINT, UNIVERSAL, REAR.....	50-14
1B2	HITCH TUBE MAIN HARNESS	40-13			
1F12	HOOD, REAR	80-7		K	
2H18	HORIZONTAL UNLDG. AUGER DRIVE GEAR CASE.....	130-37	1E9	KIT, ADJUSTING SCREW	70-33
2H20	HORIZONTAL UNLOADING AUGER AND HOUSING	130-39	1D17	KIT, ARMATURE REPAIR (AE37061).....	70-15
2H15	HORIZONTAL UNLOADING AUGER SWIVEL	130-33	1D19	KIT, ARMATURE REPAIR (AH96359).....	70-17
2H16	HORIZONTAL UNLOADING AUGER SWIVEL	130-34	1E8	KIT, BELT PICKUP FLOW CONTROL VALVE.....	70-31
2H13	HORIZONTAL UNLOADING AUGER SWIVEL SHROUD ..	130-31	1E4	KIT, BELT PICKUP PUMP	70-27
1D9	HOSE AND COUPLER CONVERSION.....	70-6	1E6	KIT, BELT PICKUP PUMP BACK PLATE.....	70-29
2B18	HOSE,CYL.SHAFT BRG.HSG.LUBE BANK-RH	120-28	2I16	KIT, CHECK BLOCK, DIAL-A-MATIC	160-2
1D7	HOSES AND COUPLERS	70-4	2J25	KIT, DECAL	170-20
1D13	HOSES AND LINES, HYDRAULIC OIL.....	70-11	2I18	KIT, DIAL-A-MATIC MAIN VALVE	160-5
1D6	HOSES, HITCH BEAM HYDRAULIC.....	70-3	2I15	KIT, DIAL-A-MATIC VALVE	160-1
1E13	HOSES, UNLOADING AUGER SWING HYDRAULIC	70-37	2I21	KIT, DROP RATE VALVE, DIAL-A-MATIC	160-8
1F23	HOUSE, FEEDER, FRONT SHEETS	110-5	1C1	KIT, ELECTRICAL CONNECTOR SERVICE.....	40-36
2H9	HOUSING AND AUGER, GRAIN TANK VERTICAL.....	130-27	1G6	KIT, HEADER LIFT HYDRAULIC CYLINDER.....	110-13
2H20	HOUSING AND AUGER, HORIZONTAL UNLOADING	130-39	2I18	KIT, MAIN VALVE BLOCK SOLENOID.....	160-5
2H5	HOUSING AND SHIELD, GRAIN TANK SUMP	130-23	1E6	KIT, PLATE, BACK, BELT PICKUP PUMP.....	70-29
2H6	HOUSING AND SHIELD, GRAIN TANK SUMP	130-24	1D21	KIT, POPPET REPAIR (AH102055)	70-19
2E4	HOUSING, CLEAN GRAIN ELEVATOR	120-93	1D23	KIT, POPPET REPAIR (AH102056)	70-21
2E5	HOUSING, CLEAN GRAIN ELEVATOR	120-94	1B23	KIT, TERMINAL AND WIRING	40-34
2D25	HOUSING, CLEAN GRAIN LOWER AUGER	120-89	1F1	KIT, UNLOADING AUGER SWING HYD. CYL.	70-50
2E2	HOUSING, CLEAN GRAIN LOWER AUGER	120-91	1F3	KIT, UNLOADING AUGER SWING HYD. CYL.	70-52
2C18	HOUSING, CLEANING FAN	120-55	1E23	KIT, UNLOADING AUGER SWING HYD. CYLINDER	70-47
1A17	HOUSING, CONTROL BOX.....	40-3			

ALPHABETICAL INDEX - CONTINUED

GRID		PAGE	GRID		PAGE
1E25	KIT,UNLOADING AUGER SWING HYD.CYLINDER.....	70 - 49	1E17	MOUNTING,UNLOADING AUGER SWING HYDRAULIC....	70 - 41
2F23	KNIFE AND SUPPORT, STRAW CHOPPER	120 - 140	1E18	MOUNTING,UNLOADING AUGER SWING HYDRAULIC....	70 - 42
			1E20	MOUNTING,UNLOADING AUGER SWING HYDRAULIC....	70 - 44
	L		2C5	MOUNTINGS AND BEATER IDLER	120 - 40
1F14	LADDER, REAR	80 - 9	2C6	MOUNTINGS AND BEATER IDLER	120 - 41
1B16	LAMP, FIELD	40 - 27	1A21	MOUNTINGS, CYLINDER TACHOMETER	40 - 7
1B14	LAMP, GRAIN TANK	40 - 25	1A22	MOUNTINGS, CYLINDER TACHOMETER	40 - 8
1B14	LAMP, UNLOADING AUGER.....	40 - 25	2I3	MOUNTINGS, PRIMARY COUNTERSHAFT.....	140 - 7
2E4	LATCH, CLEAN GRAIN ELEVATOR.....	120 - 93	1A18	MTG. BRKT., CONTROL BOX, DIAL-A-MATIC	40 - 4
2E5	LEVER, CLEAN GRAIN ELEVATOR HOUSING.....	120 - 94		O	
1F25	LEVER, DOOR, TOP, FEEDER HOUSE	110 - 7	1D13	OIL LINES AND HOSES, HYDRAULIC.....	70 - 11
1B18	LIGHTS, TAIL	40 - 29	1E11	OIL LINES, BELT PICKUP.....	70 - 35
1B18	LIGHTS, WARNING	40 - 29	1D11	OIL LINES, HEADER LIFT.....	70 - 9
1D13	LINES AND HOSES, HYDRAULIC OIL.....	70 - 11	1E13	OIL LINES, UNLOADING AUGER SWING HYD.	70 - 37
1D11	LINES, HEADER LIFT OIL.....	70 - 9	1D25	OIL RESERVOIR, HYDRAULIC.....	70 - 23
1D6	LINES, HITCH BEAM HYDRAULIC.....	70 - 3	2B24	OPEN-BAR CONCAVE.....	120 - 35
1E11	LINES, OIL, BELT PICKUP	70 - 35	2H2	OPTIONAL ADJUSTABLE FRONT AND REAR GRAIN TANK AUGER COVERS	130 - 20
1E13	LINES,OIL,UNLOADING AUGER SWING HYD.	70 - 37		P	
2B14	LINK, DUAL-RANGE CYLINDER DRIVE LOCKOUT ARM	120 - 23	2D7	PAN, EXTENSION, STRAW WALKER	120 - 69
2C15	LINKAGE, CLEANING FAN SPEED CONTROL.....	120 - 51	2G13	PANEL, GRAIN TANK	130 - 6
2F8	LOADING AUGER AND GRAIN TANK GEAR CASE	120 - 124	1C15	PIN, LOCKING (HITCH TUBE)	50 - 9
2F5	LOADING AUGER AND HOUSING.....	120 - 121	2D20	PITMAN, SIEVE	120 - 83
2J14	LOADING AUGER BELTS	170 - 9	2F19	PLATE AND FINS, STRAW CHOPPER	120 - 136
2J14	LOADING AUGER DRIVE	170 - 9	2F21	PLATE AND FINS, STRAW CHOPPER	120 - 138
2F7	LOADING AUGER GEAR CASE	120 - 123	1E6	PLATE, BACK, BELT PICKUP PUMP KIT	70 - 29
2J14	LOADING AUGER SHEAVES	170 - 9	1F6	PLATE, FEED, CYLINDER	80 - 1
2J3	LOCK, HARVESTRAK LEVER SELECTOR	160 - 14	2B8	PLATE, FILLER, RASP-BAR	120 - 17
1C15	LOCKING MECHANISM, HITCH TUBE.....	50 - 9	2B9	PLATE, FILLER, RASP-BAR (DUAL-RANGE CYLINDER DRIVE)	120 - 18
1C15	LOCKING PIN (HITCH TUBE).....	50 - 9	1D21	POPPET REPAIR KIT (AH102055)	70 - 19
2B14	LOCKOUT ARM, DUAL-RANGE CYLINDER DRIVE	120 - 23	1D23	POPPET REPAIR KIT (AH102056)	70 - 21
1B5	LOW SHAFT SPEED MONITORS.....	40 - 16	1C24	POWERSHAFT AND FRONT UNIV. JOINT SHIELDS.....	50 - 18
1B7	LOW SHAFT SPEED MONITORS.....	40 - 18	1C17	POWERSHAFT AND SHIELD, TELESCOPING	50 - 11
2E2	LOWER AUGER, CLEAN GRAIN	120 - 91	1C14	POWERSHAFT BEARING SUPPORT.....	50 - 8
2H11	LOWER GEAR CASE, VERTICAL AUGER	130 - 29	1C19	POWERSHAFT, MAIN	50 - 13
2E17	LOWER TAILINGS AUGER	120 - 107	1C20	POWERSHAFT, MAIN	50 - 14
2E18	LOWER TAILINGS AUGER	120 - 108	2I3	PRIMARY COUNTERSHAFT AND MOUNTINGS.....	140 - 7
2E13	LOWER TAILINGS AUGER DRIVE TIGHTENER.....	120 - 103	2J9	PRIMARY COUNTERSHAFT DRIVE SHEAVES	170 - 4
2E18	LOWER TAILINGS AUGER SHAFT	120 - 108	2I1	PRIMARY COUNTERSHAFT DRIVE SHIELD	140 - 5
2E18	LOWER TAILINGS AUGER TIGHTENER.....	120 - 108	2H24	PRIMARY COUNTERSHAFT DRIVE TIGHTENER.....	140 - 3
2E15	LOWER TAILINGS HOUSING	120 - 105	2I8	PRIMARY COUNTERSHAFT LUBE BANK SYSTEM-LH....	140 - 12
2B19	LUBE BANK SYS,CYLINDER SHAFT BEARING-LH	120 - 29	2I9	PRIMARY COUNTERSHAFT LUBE BANK SYSTEM-RH....	140 - 13
2B17	LUBE BANK SYS,CYLINDER SHAFT BRG.HSG.-RH	120 - 27	2I5	PRIMARY COUNTERSHAFT SHEAVES.....	140 - 9
2F8	LUBE BANK SYSTEM (R.H.).....	120 - 124	2I6	PRIMARY COUNTERSHAFT SHEAVES.....	140 - 10
2C12	LUBE BANK SYSTEM, BEATER BEARING-L.H.	120 - 48	2J10	PRIMARY COUNTERSHAFT TO TIGHTENERS	170 - 5
2C13	LUBE BANK SYSTEM, BEATER BEARING-R.H.....	120 - 49	2J10	PRIMARY CTRSHFT TO TORQ-SENSING CTRSHFT	170 - 5
2H21	LUBE BANK SYSTEM, UNLOADING AUGER	130 - 40	1D1	PUMP MOUNTING, BELT PICKUP HYDRAULIC.....	50 - 20
2I8	LUBE BANK SYSTEM,PRIMARY COUNTERSHAFT-LH	140 - 12	1E2	PUMP, BELT PICKUP	70 - 25
2I9	LUBE BANK SYSTEM,PRIMARY COUNTERSHAFT-RH....	140 - 13	1E4	PUMP, BELT PICKUP KIT.....	70 - 27
2B16	LUBE BANK,CYL.DR.CTRSHAFT.BRG.HSG.-RH.....	120 - 26		Q	
2B18	LUBE BANK,CYL.SHAFT BRG.HSG. (R.H.).....	120 - 28	1F21	QUIK-TATCH COUPLER (L.H.).....	110 - 3
			1F20	QUIK-TATCH COUPLER (R.H.).....	110 - 1
	M		1F21	QUIK-TATCH COUPLER SHIELDS (L.H.).....	110 - 3
1C19	MAIN POWERSHAFT.....	50 - 13	1F20	QUIK-TATCH COUPLER SHIELDS (R.H.)	110 - 1
1C20	MAIN POWERSHAFT.....	50 - 14	2B11	QUILL, DUAL-RANGE CYLINDER GEAR CASE	120 - 20
2I17	MAIN VALVE BLOCK SOLENOID.....	160 - 3			
1B9	MONITOR, HARVESTRAK.....	40 - 20			
1B5	MONITORS, LOW SHAFT SPEED	40 - 16			
1B7	MONITORS, LOW SHAFT SPEED	40 - 18			
1B19	MOTOR, ELECTRIC - BELT PICKUP DRIVE.....	40 - 30			
1D1	MOUNTING, BELT PICKUP HYDRAULIC PUMP.....	50 - 20			
2G6	MOUNTING, STRAW SPREADER	120 - 149			
1E15	MOUNTING,UNLOADING AUGER SWING HYDRAULIC....	70 - 39			

ALPHABETICAL INDEX - CONTINUED

GRID		PAGE	GRID		PAGE
	R				
2B8	RASP-BAR CYLINDER.....	120-17	1E2	SHEAVE, BELT PICKUP	70-25
2B9	RASP-BAR CYLINDER (DUAL-RANGE CYLINDER DRIVE)	120-18	2E12	SHEAVE, CHAIN, CLEAN GRAIN ELEVATOR.....	120-101
2C4	RATCHET, CONCAVE ADJUSTING SHAFT	120-39	2E10	SHEAVE, CLEAN GRAIN ELEVATOR	120-99
2G25	REAR CROSS AUGER, GRAIN TANK	130-18	2C22	SHEAVE, DRIVE, SHOE GRAIN SUPPLY AUGERS.....	120-59
1F12	REAR HOOD	80-7	2B11	SHEAVE, DUAL-RANGE CYLINDER GEAR CASE	120-20
1F13	REAR HOOD SUPPORT ROD	80-8	2F7	SHEAVE, GEAR CASE, LOADING AUGER	120-123
1F17	REAR JACKSTAND	80-13	2E17	SHEAVE, LOWER TAILINGS AUGER	120-107
1F14	REAR LADDER.....	80-9	2E13	SHEAVE, LOWER TAILINGS AUGER DRIVE	120-103
1B18	REAR REFLECTORS.....	40-29	1G10	SHEAVE, LOWER, FEEDER HOUSE	110-17
2F9	REAR SHIELD, SEPARATOR (R.H.).....	120-125	2F24	SHEAVE, STRAW CHOPPER ROTOR.....	120-141
1F17	REAR SUPPORT TUBE.....	80-13	2G4	SHEAVE, STRAW SPREADER	120-147
1B16	REFLECTOR, FRONT	40-27	2D11	SHEAVE, STRAW SPREADER DRIVE.....	120-73
1B18	REFLECTORS, REAR	40-29	2G20	SHEAVE, UNLOADING AUGER DRIVE	130-13
2G11	REINFORCEMENT BRACE, GRAIN TANK	130-4	2E11	SHEAVE,DR.CTRSHAFT.,CLEAN GRAIN ELEVATOR	120-100
2G12	REINFORCEMENT BRACE, GRAIN TANK	130-5	2J11	SHEAVES AND BELTS, BEATER DRIVE	170-6
2C2	REMOTE DUMP STONE TRAP	120-37	2J10	SHEAVES AND BELTS, CYLINDER DRIVE.....	170-5
1D25	RESERVOIR, HYDRAULIC OIL.....	70-23	2J16	SHEAVES AND SPROCKETS, TAILINGS ELEVATOR	170-11
2D7	RISER, STRAW WALKER	120-69	2J11	SHEAVES, BEATER DRIVE	170-6
1C15	ROD, CONTROL (HITCH TUBE).....	50-9	2J14	SHEAVES, CLEAN GRAIN ELEVATOR	170-9
1F13	ROD, SUPPORT, REAR HOOD	80-8	2J9	SHEAVES, DRIVE, BELT PICKUP PUMP	170-4
2F25	ROTOR AND BLADES, STRAW CHOPPER	120-142	2J12	SHEAVES, DRIVE, CLEANING FAN.....	170-7
2G1	ROTOR AND BLADES, STRAW CHOPPER	120-143	2J9	SHEAVES, DRIVE, PRIMARY COUNTERSHAFT	170-4
	S		2J14	SHEAVES, LOADING AUGER.....	170-9
1C11	SAFETY CHAIN, HITCH	50-5	2I5	SHEAVES, PRIMARY COUNTERSHAFT	140-9
1C12	SAFETY CHAIN, HITCH	50-6	2I6	SHEAVES, PRIMARY COUNTERSHAFT	140-10
1F6	SEALS, CYLINDER DOOR	80-1	2B8	SHEAVES, RASP-BAR CYLINDER	120-17
2I11	SECONDARY COUNTERSHAFT.....	140-15	1G12	SHEAVES, UPPER, FEEDER HOUSE	110-19
2I13	SECONDARY COUNTERSHAFT DRIVE IDLER	140-17	2J8	SHEAVES,DRIVE,FEEDER HOUSE (REG. FIXED).....	170-3
1B22	SENSING UNIT, STRAW WALKER PLUGGING	40-33	2J13	SHEAVES,DRIVE,SHOE GRAIN SUPPLY AUGERS	170-8
1B3	SENSOR, HITCH TUBE.....	40-14	1G2	SHEETS, BOTTOM, FEEDER HOUSE	110-9
1B2	SENSOR, SHORT TURN.....	40-13	1F23	SHEETS, FRONT, FEEDER HOUSE	110-5
1B3	SENSOR, SHORT TURN.....	40-14	2G13	SHEETS, GRAIN TANK	130-6
1A24	SENSOR, TACHOMETER CYLINDER SPEED.....	40-11	1G4	SHEETS, SIDE, FEEDER HOUSE	110-11
2D5	SEPARATOR CURTAINS.....	120-67	1F25	SHEETS, TOP, FEEDER HOUSE	110-7
1F10	SEPARATOR L.H. SIDE SHEETS AND FRAME	80-5	2H5	SHIELD AND HOUSING, GRAIN TANK SUMP	130-23
1B5	SEPARATOR MAIN HARNESS.....	40-16	2H6	SHIELD AND HOUSING, GRAIN TANK SUMP	130-24
1B7	SEPARATOR MAIN HARNESS AND SHAFT MONITORS.....	40-18	1C17	SHIELD AND TELESCOPING POWERSHAFT.....	50-11
1F8	SEPARATOR R.H. SIDE SHEETS AND FRAME	80-3	2A18	SHIELD, CYLINDER DRIVES	120-1
2F9	SEPARATOR REAR SHIELD (R.H.)	120-125	2I1	SHIELD, DRIVE, PRIMARY COUNTERSHAFT	140-5
2A19	SEPARATOR RIGHT-HAND SHIELD	120-3	2B15	SHIELD, DUAL-RANGE CYLINDER DRIVE GEAR CASE	120-25
2F10	SEPARATOR, RIGHT-HAND SHIELD.....	120-127	1G9	SHIELD, LEFT-HAND, FEEDER HOUSE	110-16
2J24	SERIAL NO. PLATE	170-19	1C25	SHIELD, REAR UNIVERSAL JOINT	50-19
1C1	SERVICE KIT, ELECTRICAL CONNECTOR.....	40-36	2F9	SHIELD, REAR, SEPARATOR (R.H.)	120-125
1C23	SHAFT (GEAR CASE)	50-17	2A19	SHIELD, SEPARATOR, RIGHT-HAND	120-3
2E12	SHAFT, CHAIN, CLEAN GRAIN ELEVATOR	120-101	2F10	SHIELD, SEPARATOR, RIGHT-HAND	120-127
2C4	SHAFT, CONCAVE ADJUSTING.....	120-39	2F24	SHIELD, STRAW CHOPPER ROTOR	120-141
2A25	SHAFT, CYLINDER DRIVE INTERMEDIATE	120-9	2D11	SHIELD, STRAW SPREADER DRIVE	120-73
2B1	SHAFT, DUAL-RANGE CYLINDER DRIVE INTERMEDIATE	120-10	2D7	SHIELD, STRAW WALKER	120-69
1G7	SHAFT, IDLER, FEEDER CONVEYOR.....	110-14	2E22	SHIELD, TAILINGS ELEVATOR	120-112
2E18	SHAFT, LOWER TAILINGS AUGER	120-108	1B5	SHIELDS, MAIN, ELECTRICAL HARNESS	40-16
1G10	SHAFT, LOWER, FEEDER HOUSE	110-17	1F21	SHIELDS, QUIK-TATCH COUPLER (L.H.)	110-3
2B13	SHAFT, PINION, DUAL-RANGE CYLINDER DRIVE	120-22	1F20	SHIELDS, QUIK-TATCH COUPLER (R.H.).....	110-1
2B9	SHAFT, RASP-BAR (DUAL-RANGE CYLINDER DRIVE)	120-18	2G2	SHIELDS, STRAW SPREADER	120-145
2B8	SHAFT, RASP-BAR CYLINDER	120-17	1C24	SHIELDS,POWERSHAFT AND FRONT UNIV.JOINT.....	50-18
2D22	SHAFT, SHOE PITMAN.....	120-85	2D23	SHOE CRANKSHAFT DRIVE TIGHTENER	120-87
2G4	SHAFT, STRAW SPREADER	120-147	2D4	SHOE GRAIN SUPPLY AUGERS	120-65
1G12	SHAFT, UPPER, FEEDER HOUSE.....	110-19	2J13	SHOE GRAIN SUPPLY AUGERS DRIVE BELTS	170-8
2B22	SHEAR BAR, CYLINDER.....	120-33	2C24	SHOE GRAIN SUPPLY AUGERS DRIVE IDLER.....	120-61
			2C22	SHOE GRAIN SUPPLY AUGERS DRIVE SHAFT	120-59
			2C22	SHOE GRAIN SUPPLY AUGERS DRIVE SHEAVE.....	120-59
			2J13	SHOE GRAIN SUPPLY AUGERS DRIVE SHEAVES	170-8
			2C24	SHOE GRAIN SUPPLY AUGERS DRIVE TIGHTENER.....	120-61
			2D2	SHOE GRAIN SUPPLY AUGERS HOUSING	120-63
			2D22	SHOE PITMAN	120-85
			2D22	SHOE PITMAN SHAFT	120-85

ALPHABETICAL INDEX - CONTINUED

GRID		PAGE	GRID		PAGE
1B2	SHORT TURN SENSOR	40 - 13	2D20	SWINGERS, SIEVE FRAME	120 - 83
2H13	SHROUD,HORIZONTAL UNLOADING AUGER SWIVEL....	130 - 31	2I23	SWITCH, ACTUATING	160 - 10
1F10	SIDE SHEETS AND FRAME, SEPARATOR L.H.....	80 - 5	2H13	SWIVEL SHROUD,HORIZONTAL UNLOADING AUGER....	130 - 31
1F8	SIDE SHEETS AND FRAME, SEPARATOR R.H.	80 - 3	2H15	SWIVEL, HORIZONTAL UNLOADING AUGER	130 - 33
2D18	SIEVE	120 - 81	2H16	SWIVEL, HORIZONTAL UNLOADING AUGER	130 - 34
2D20	SIEVE FRAME	120 - 83			
2D20	SIEVE FRAME SWINGERS.....	120 - 83		T	
2D20	SIEVE PITMAN.....	120 - 83			
2G13	SKIRTS, GRAIN TANK.....	130 - 6	2J1	TACHOMETER AND CIRCUIT BOX BRACKET.....	160 - 12
2G16	SKIRTS, GRAIN TANK.....	130 - 9	1A24	TACHOMETER CYLINDER SPEED SENSOR	40 - 11
2I17	SOLENOID, MAIN VALVE BLOCK, DIAL-A-MATIC	160 - 3	2C9	TACHOMETER DRIVE	120 - 45
1D2	SPINDLE, HOUSING, AND WHEEL	50 - 21	2C10	TACHOMETER DRIVE	120 - 46
2E10	SPRING, CLEAN GRAIN ELEVATOR.....	120 - 99	1A21	TACHOMETER, CYLINDER.....	40 - 7
2E13	SPRING, LOWER TAILINGS AUGER DRIVE.....	120 - 103	1B18	TAIL LIGHTS	40 - 29
2F12	SPRING, STRAW CHOPPER DRIVE	120 - 129	2J16	TAILINGS ELEVATOR AND AUGER DRIVES	170 - 11
2E12	SPROCKET, CHAIN, CLEAN GRAIN ELEVATOR	120 - 101	2E24	TAILINGS ELEVATOR CONVEYOR BEARINGS	120 - 114
2D9	SPROCKET, DRIVEN, STRAW WALKER.....	120 - 71	2E25	TAILINGS ELEVATOR CONVEYOR BEARINGS	120 - 115
2D12	SPROCKET, STRAW WALKER DRIVE TIGHTENER	120 - 75	2E24	TAILINGS ELEVATOR CONVEYOR CHAIN.....	120 - 114
2G20	SPROCKET, UNLOADING AUGER DRIVE	130 - 13	2E25	TAILINGS ELEVATOR CONVEYOR CHAIN.....	120 - 115
2D23	SPROCKET,SHOE CRANKSHAFT DRIVE TIGHTENER....	120 - 87	2E24	TAILINGS ELEVATOR CONVEYOR SPROCKETS	120 - 114
2J16	SPROCKETS AND SHEAVES, TAILINGS ELEVATOR	170 - 11	2E25	TAILINGS ELEVATOR CONVEYOR SPROCKETS	120 - 115
2J12	SPROCKETS, DRIVE, STRAW WALKER.....	170 - 7	2E21	TAILINGS ELEVATOR HOUSING	120 - 111
2E24	SPROCKETS, TAILINGS ELEVATOR CONVEYOR.....	120 - 114	2E22	TAILINGS ELEVATOR HOUSING	120 - 112
2E25	SPROCKETS, TAILINGS ELEVATOR CONVEYOR.....	120 - 115	2J16	TAILINGS ELEVATOR SHEAVES AND SPROCKETS.....	170 - 11
1C16	STAND, JACK, HITCH BEAM	50 - 10	2G11	TANK, GRAIN, REINFORCEMENT BRACE	130 - 4
1F6	STONE TRAP.....	80 - 1	2G12	TANK, GRAIN, REINFORCEMENT BRACE	130 - 5
2C2	STONE TRAP, REMOTE DUMP	120 - 37	2G13	TANK, GRAIN, SKIRTS	130 - 6
1D25	STRAINER, HYDRAULIC RESERVOIR.....	70 - 23	1C17	TELESCOPING POWERSHAFT AND SHIELD.....	50 - 11
2F14	STRAW CHOPPER CURTAIN.....	120 - 131	1B23	TERMINAL AND WIRING KIT	40 - 34
2F12	STRAW CHOPPER DRIVE IDLER AND TIGHTENER.....	120 - 129	1C5	TERMINALS, SUPPLEMENTARY, AND CONNECTORS....	40 - 40
2J20	STRAW CHOPPER DRIVES	170 - 15	2B4	TIGHTENER, CYLINDER DRIVE.....	120 - 13
2F15	STRAW CHOPPER HOUSING	120 - 132	2H24	TIGHTENER, DRIVE, PRIMARY COUNTERSHAFT.....	140 - 3
2F17	STRAW CHOPPER HOUSING	120 - 134	2H24	TIGHTENER, DRIVE, UNLOADING AUGER	140 - 3
2J20	STRAW CHOPPER IDLERS	170 - 15	2B6	TIGHTENER, DUAL-RANGE CYLINDER DRIVE	120 - 15
2F23	STRAW CHOPPER KNIFE AND SUPPORT.....	120 - 140	1G13	TIGHTENER, FEEDER HOUSE DRIVE	110 - 20
2F19	STRAW CHOPPER PLATE AND FINS.....	120 - 136	1G11	TIGHTENER, LOWER BELT, FEEDER HOUSE	110 - 18
2F21	STRAW CHOPPER PLATE AND FINS.....	120 - 138	2E18	TIGHTENER, LOWER TAILINGS AUGER	120 - 108
2F25	STRAW CHOPPER ROTOR AND BLADES	120 - 142	2E13	TIGHTENER, LOWER TAILINGS AUGER DRIVE	120 - 103
2G1	STRAW CHOPPER ROTOR AND BLADES	120 - 143	2D23	TIGHTENER, SHOE CRANKSHAFT DRIVE.....	120 - 87
2F24	STRAW CHOPPER ROTOR SHEAVE AND SHIELD.....	120 - 141	2F12	TIGHTENER, STRAW CHOPPER DRIVE.....	120 - 129
2J20	STRAW CHOPPER TIGHTENERS	170 - 15	2D12	TIGHTENER, STRAW WALKER DRIVE	120 - 75
2G4	STRAW SPREADER	120 - 147	2F1	TIGHTENER, UPPER TAILINGS AUGER DRIVE.....	120 - 116
2D11	STRAW SPREADER DRIVE SHEAVE AND SHIELD	120 - 73	2C24	TIGHTENER,DRIVE,SHOE GRAIN SUPPLY AUGERS	120 - 61
2J20	STRAW SPREADER DRIVES	170 - 15	2J8	TIGHTENERS, FEEDER HOUSE (REG. FIXED)	170 - 3
2G6	STRAW SPREADER MOUNTING AND GUARD	120 - 149	2J20	TIGHTENERS, STRAW CHOPPER.....	170 - 15
2G2	STRAW SPREADER SHIELDS	120 - 145	2J20	TIGHTENERS, STRAW SPREADER.....	170 - 15
2J20	STRAW SPREADER TIGHTENERS	170 - 15	2G22	TIGHTENERS,GRAIN TANK CROSS AUGER DRIVE	130 - 15
2D7	STRAW WALKER.....	120 - 69	1F15	TOOL BOX	80 - 11
2J12	STRAW WALKER DRIVE CHAIN	170 - 7	2J10	TORQ-SENSING CTRSHAFT SHEAVES AND BELTS	170 - 5
2J12	STRAW WALKER DRIVE SPROCKETS.....	170 - 7	2J10	TORQ-SENSING CYL. DR. SHEAVES AND BELTS	170 - 5
2D12	STRAW WALKER DRIVE TIGHTENER	120 - 75	1F6	TRAP, STONE	80 - 1
2D9	STRAW WALKER FRONT CRANKSHAFT	120 - 71	2C2	TRAP, STONE, REMOTE DUMP	120 - 37
1B22	STRAW WALKER PLUGGING SENSING UNIT.....	40 - 33	1F17	TUBE SUPPORT, REAR	80 - 13
2D11	STRAW WALKER REAR CRANKSHAFT	120 - 73			
2H5	SUMP HOUSING AND SHIELD, GRAIN TANK	130 - 23		U	
2H6	SUMP HOUSING AND SHIELD, GRAIN TANK	130 - 24	1C25	UNIVERSAL JOINT SHIELD (REAR)	50 - 19
1C5	SUPPLEMENTARY TERMINALS AND CONNECTORS.....	40 - 40	1C19	UNIVERSAL JOINT, REAR	50 - 13
2D4	SUPPLY AUGERS, SHOE GRAIN	120 - 65	1C20	UNIVERSAL JOINT, REAR	50 - 14
2F23	SUPPORT AND KNIFE, STRAW CHOPPER	120 - 140	1C25	UNIVERSAL SHIELD, GEAR CASE	50 - 19
2A21	SUPPORT BRACES, CYLINDER DRIVE	120 - 5	2H18	UNLOADING AUG.DRIVE GEAR CASE,HORIZONTAL.....	130 - 37
1F13	SUPPORT ROD, REAR HOOD.....	80 - 8	2H20	UNLOADING AUGER AND HOUSING, HORIZONTAL	130 - 39
1C24	SUPPORT, HYDRAULIC HOSE	50 - 18	2H1	UNLOADING AUGER COVERS	130 - 19
1C14	SUPPORT, POWERSHAFT, BEARING.....	50 - 8	2G20	UNLOADING AUGER DRIVE COUNTERSHAFT	130 - 13
2E22	SUPPORT, TAILINGS ELEVATOR	120 - 112	2G21	UNLOADING AUGER DRIVE IDLER.....	130 - 14
1F17	SUPPORT, TUBE, REAR.....	80 - 13			
2B18	SUPPORT,CYL.SHAFT BRG.HSG.LUBE BANK-RH	120 - 28			
2D16	SWINGERS, CHAFFER FRAME	120 - 79			

ALPHABETICAL INDEX - CONTINUED

<i>GRID</i>		<i>PAGE</i>	<i>GRID</i>	<i>PAGE</i>
2G20	UNLOADING AUGER DRIVE SHEAVE.....	130 - 13		
2G20	UNLOADING AUGER DRIVE SPROCKET	130 - 13		
2H24	UNLOADING AUGER DRIVE TIGHTENER	140 - 3		
2J18	UNLOADING AUGER DRIVES	170 - 13		
1B21	UNLOADING AUGER ELECTROMAGNETIC CLUTCH	40 - 32		
1B14	UNLOADING AUGER HARNESS	40 - 25		
1B14	UNLOADING AUGER LAMP	40 - 25		
2H21	UNLOADING AUGER LUBE BANK SYSTEM.....	130 - 40		
1E25	UNLOADING AUGER SWING HYD.CYLINDER KIT	70 - 49		
1E13	UNLOADING AUGER SWING HYD.OIL LINES	70 - 37		
1E15	UNLOADING AUGER SWING HYDRAULIC CYLINDER	70 - 39		
1E17	UNLOADING AUGER SWING HYDRAULIC CYLINDER	70 - 41		
1E18	UNLOADING AUGER SWING HYDRAULIC CYLINDER	70 - 42		
1E20	UNLOADING AUGER SWING HYDRAULIC CYLINDER	70 - 44		
1E13	UNLOADING AUGER SWING HYDRAULIC HOSES.....	70 - 37		
1E15	UNLOADING AUGER SWING HYDRAULIC MOUNTING ..	70 - 39		
1E17	UNLOADING AUGER SWING HYDRAULIC MOUNTING ..	70 - 41		
1E18	UNLOADING AUGER SWING HYDRAULIC MOUNTING ..	70 - 42		
1E20	UNLOADING AUGER SWING HYDRAULIC MOUNTING ..	70 - 44		
2H13	UNLOADING AUGER SWIVEL SHROUD,HORIZONTAL....	130 - 31		
2H15	UNLOADING AUGER SWIVEL, HORIZONTAL	130 - 33		
2H16	UNLOADING AUGER SWIVEL, HORIZONTAL	130 - 34		
2F2	UPPER TAILINGS AUGER AND HOUSING.....	120 - 118		
2F1	UPPER TAILINGS AUGER DRIVE TIGHTENER	120 - 116		
V				
1E7	VALVE, BELT PICKUP FLOW CONTROL	70 - 30		
1E7	VALVE, CONTROL, BELT PICKUP FLOW.....	70 - 30		
1D15	VALVE, CYLINDER SPEED CONTROL	70 - 13		
2I19	VALVES, DIAL-A-MATIC	160 - 6		
2H9	VERTICAL AUGER AND HOUSING, GRAIN TANK.....	130 - 27		
2H11	VERTICAL AUGER LOWER GEAR CASE	130 - 29		
2J18	VERTICAL UNLOADING AUGER DRIVES	170 - 13		
W				
1B22	WALKER, STRAW, PLUGGING SENSING UNIT.....	40 - 33		
2J22	WARNING DECALS	170 - 17		
1B18	WARNING LIGHTS.....	40 - 29		
2B11	WHEEL, DUAL-RANGE CYLINDER GEAR CASE	120 - 20		
1D2	WHEEL, SPINDLE, AND HOUSING	50 - 21		
1B23	WIRING AND TERMINAL KIT	40 - 34		
1B23	WIRING CRIMPING TOOL	40 - 34		
1B9	WIRING HARNESS, HARVESTRAK COMBINE MONITOR.....	40 - 20		
1A18	WIRING HARNESS,CONTROL BOX,DIAL-A-MATIC	40 - 4		
1B23	WIRING STRIPPING TOOL.....	40 - 34		
1C5	WIRING, SUPPLEMENTARY TERMINALS AND CONNECTORS	40 - 40		
Y				
2E5	YOKE, CLEAN GRAIN ELEVATOR HOUSING.....	120 - 94		

MEMORANDA

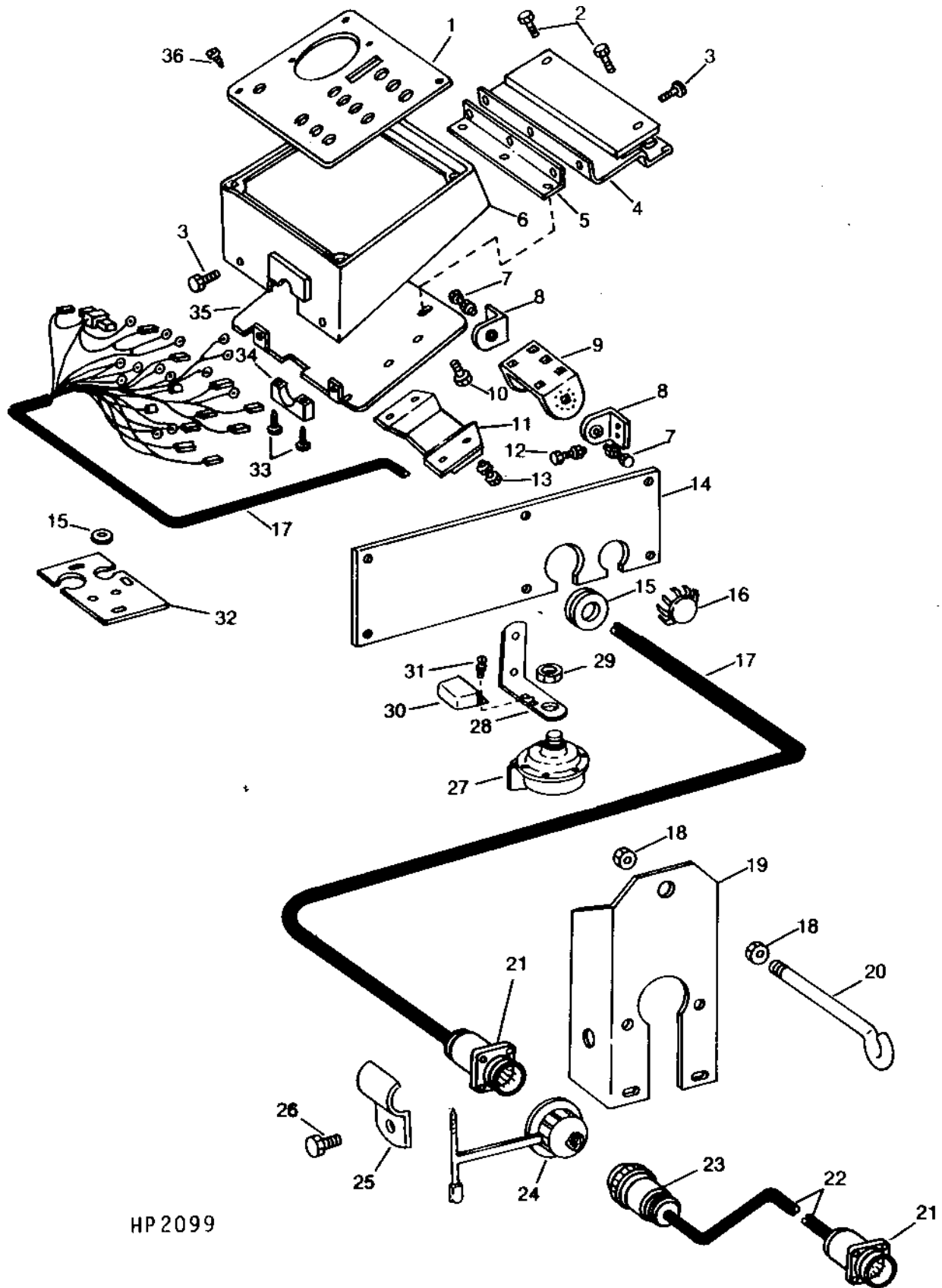
1A16

ELECTRICAL

CONTROL BOX HOUSING, MOUNTING BRACKETS, AND HARNESS (SERIAL NO. -600000)

HP2099

-UN-01JAN94



HP 2099

1A17

ELECTRICAL

CONTROL BOX HOUSING, MOUNTING BRACKETS, AND HARNESS - CONTINUED
(SERIAL NO. -600000)

KEY	PART NO.	PART NAME	QTY	SERIAL NO.	REMARKS
1	H102597	PLATE	1		
2	R54057	SCREW	2		
3	37H148	SCREW	5		1/4" X 5/8"
4	AR87457	ADAPTER	1		(SOUND GARD CAB)
5	R67211	BRACKET	1		
6	H99925	HOUSING	1		
7	19H1936	CAP SCREW	2		3/8" X 3/4"
	12H310	LOCK WASHER	2		3/8"
	AR41950	NUT	1		
8	R41879	BRACKET	2		(PRE-SOUND GARD CABS--1968-1971)
9	R41880	BRACKET	1		(PRE-SOUND GARD CABS--1968-1971)
10	37H148	SCREW	2		1/4" X 5/8"
11	R67215	PLATE	1		(4 WHEEL DRIVE-8430, 8440, 8630, 8640)
12	19H1227	CAP SCREW	4		1/4" X 1/2"
	12H297	LOCK WASHER	4		1/4"
	14H786	NUT	4		1/4"
13	19H1227	CAP SCREW	4		1/4" X 1/2"
	12H297	LOCK WASHER	4		1/4"
	14H786	NUT	4		1/4"
14	H96604	COVER	1		
15	H80627	GROMMET	1		
16	M42230	PLUG	1		
17	AH102689	WIRING HARNESS	1		
18	14H812	NUT	2		3/8"
19	H101161	BRACKET	1		
20	H101317	EYEBOLT	1		
21	H118425	CONNECTOR	2		22 HOLES
	R77464	PIN CONTACT	1		(PKG. OF 50)
	RE11156	TERMINAL	1		(PKG. OF 3)
22	AH102690	WIRING HARNESS	1		(4 WHEEL DRIVE-8430, 8440, 8630, 8640)
23	H118427	CONNECTOR	1		22 HOLES
	R77458	CONNECTOR	1		
	R77465	SOCKET CONTACT	1		(PKG. OF 50)
	RE11157	TERMINAL	1		(PKG. OF 3)
24	A32905	CAP	1		
25	R41465	CLAMP	1		
26	H29322	SCREW	1		
27	AT39043	HIGH NOTE HORN	1		(LOW NOTE)
28	H94337	BRACKET	1		
29	R11278	NUT	1		
30	AH62341	RELAY	1		
31	19H1227	CAP SCREW	2		1/4" X 1/2"
	12H302	LOCK WASHER	2		1/4"
	14H786	NUT	2		1/4"
32	H96678	PLATE	1		
33	A36895	SCREW	1		SELF-TAPPING
34	R67452	COVER	1		
35	R67210	BASE	1		
36	37H153	SCREW	4		0.190" X 3/8"

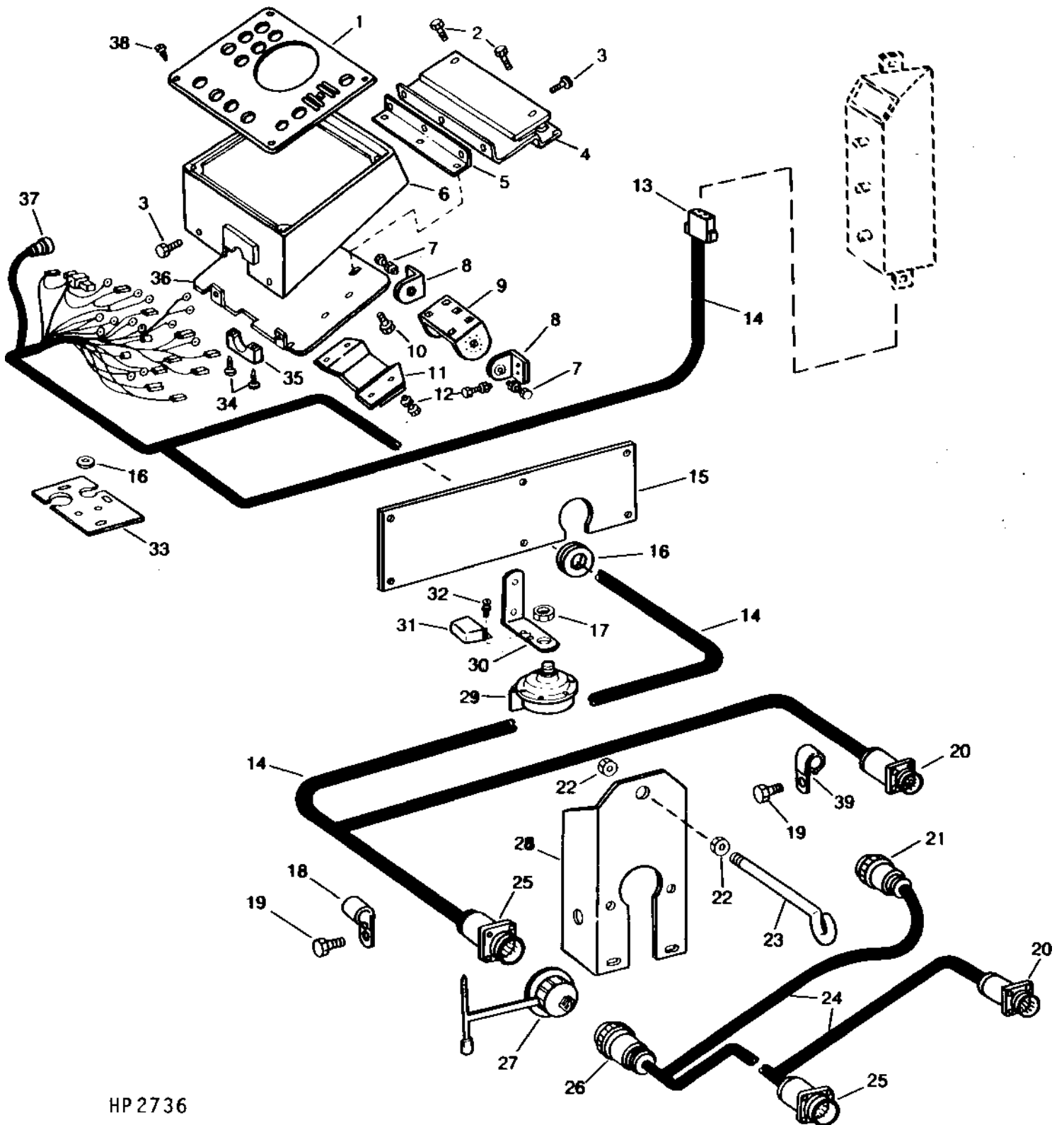
1A18

ELECTRICAL

CONTROL BOX HOUSING, MOUNTING BRACKETS AND HARNESS (DIAL-A-MATIC) (SERIAL NO. 600001-)

HP2736

-UN-01JAN94



HP 2736

CONTROL BOX HOUSING, MOUNTING BRACKETS AND HARNESS - CONTINUED
(DIAL-A-MATIC)
(SERIAL NO. 600001-)

KEY	PART NO.	PART NAME	QTY	SERIAL NO.	REMARKS
1	H115156	PLATE	1		
2	R54057	SCREW	2		
3	37H148	SCREW	5		1/4" X 5/8"
4	AR87457	ADAPTER	1		(SOUND-GARD CAB)
5	R67211	BRACKET	1		
6	H99925	HOUSING	1		
7	19H1936	CAP SCREW	2		3/8" X 3/4"
	12H310	LOCK WASHER	2		3/8"
	AR41950	NUT	1		
8	R41879	BRACKET	2		(PRE-SOUND-GARD CABS, 1968-1971)
9	R41880	BRACKET	1		(PRE-SOUND-GARD-CABS, 1968-1971)
10	37H148	SCREW	2		1/4" X 5/8"
11	R67215	PLATE	1		(4-WHEEL DRIVE - 8430,8440,8630 AND 8640)
12	19H1227	CAP SCREW	8		1/4" X 1/2"
	12H297	LOCK WASHER	8		1/4"
	14H786	NUT	8		1/4"
13	H118420	SOCKET	1		
	R77469	TERMINAL	2		(PKG. OF 5)
14	AH112736	WIRING HARNESS	1		
15	H115317	COVER	1		
16	H80627	GROMMET	2		
17	R11278	NUT	1		
18	AH89557	CLIP	1		
19	H29322	SCREW	2		
20	H118428	CONNECTOR	2		7 HOLES
	RE11156	TERMINAL	1		(PKG. OF 3)
21	H118421	ELECTRICAL PLUG	1		7 HOLES
	R77458	CONNECTOR	1		
	RE11157	TERMINAL	1		(PKG. OF 3)
22	14H812	NUT	2		3/8"
23	H101317	EYEBOLT	1		
24	AH112737	WIRING HARNESS	1		
25	R77456	RECEPTACLE	2		37 HOLES
	R77464	PIN CONTACT	1		(PKG. OF 50)
26	R77457	ELECTRICAL PLUG	1		37 HOLES
	R77458	CONNECTOR	1		
	R77465	SOCKET CONTACT	1		(PKG. OF 50)
27	A32905	CAP	2		
28	H101161	BRACKET	1		
29	AT39043	HIGH NOTE HORN	1		
30	H94337	BRACKET	1		
31	AH62341	RELAY	1		
32	19H1227	CAP SCREW	2		1/4" X 1/2"
	12H302	LOCK WASHER	2		1/4"
	14H786	NUT	2		1/4"
33	H96678	PLATE	1		
34	A36895	SCREW	2		
35	R67452	COVER	1		
36	R67210	BASE	1		
37	H118422	ELECTRICAL PLUG	1		9 HOLES
	R77460	CONNECTOR	1		RETAINER
	R77465	SOCKET CONTACT	1		(PKG. OF 50)
38	37H153	SCREW	4		0.190" X 3/8"
39	AH90990	CLIP	1		

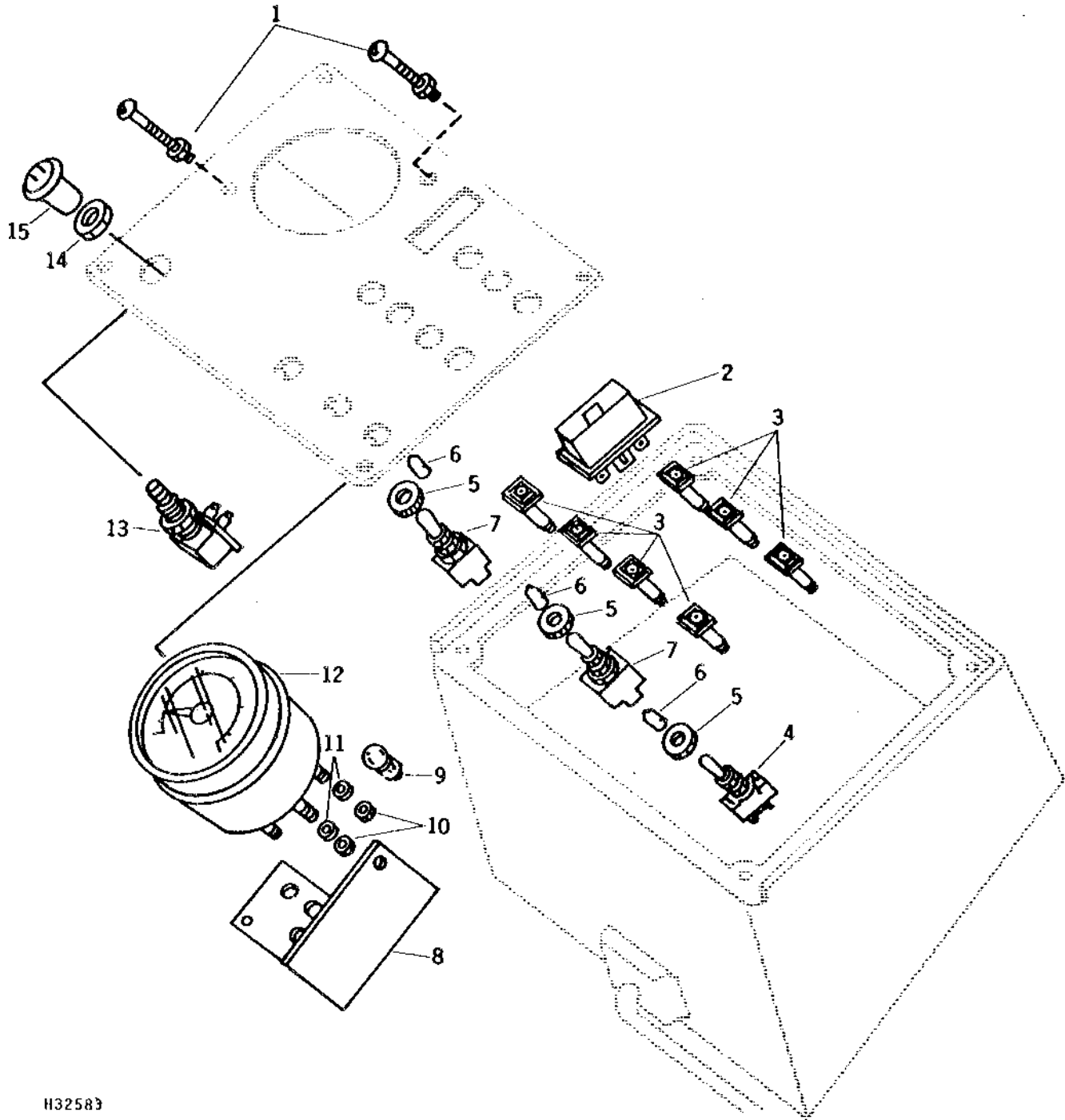
1A20

ELECTRICAL

CONTROL BOX INDICATORS, CYLINDER TACHOMETER, AND MOUNTINGS
(SERIAL NO. -600000)

H32583

-UN-01JAN94



H32583

1A21

ELECTRICAL

CONTROL BOX INDICATORS, CYLINDER TACHOMETER, AND MOUNTINGS - CONTINUED
(SERIAL NO. -600000)

KEY	PART NO.	PART NAME	QTY	SERIAL NO.	REMARKS
1	21H1283	SCREW	2		0.190" X 3-1/2"
	12H295	LOCK WASHER	2		0.190"
	14H778	NUT	2		0.190"
2	AH93153	DEVICE	1		BUZZER
3	AH94791	LAMP	7		INDICATOR
4	AH87806	SWITCH	1		TOGGLE, (UNLOADING AUGER)
5	H94505	NUT	3		
6	H94664	GRIP	3		
7	AH93711	TOGGLE SWITCH	2		(BELT PICKUP) (CYLINDER SPEED)
8	H101261	PLATE	1		
9	AH75662	BULB	1	-513350	
	AM31284	BULB	1	513351-	
10	14H631	NUT	5		0.190"
11	12H295	LOCK WASHER	5		0.190"
12	AH96683	TACHOMETER	1		CYLINDER
13	AH85260	SWITCH	1		(ELECTRIC CLUTCH)
14	M42561	NUT	1		
15	AH85259	KNOB	1		CLUTCH